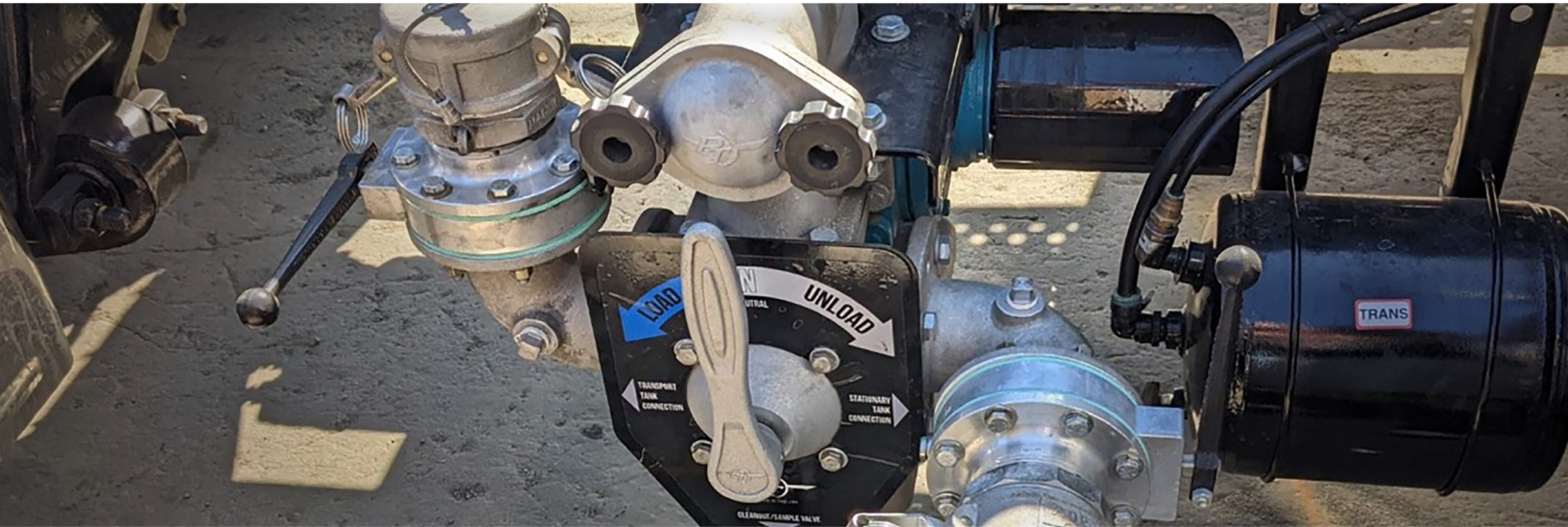




COUPLINGS AND MORE

SAFETY TANK SOLUTIONS®

FLOW CONTROL SYSTEM: FCS-V3N VANE SYSTEM

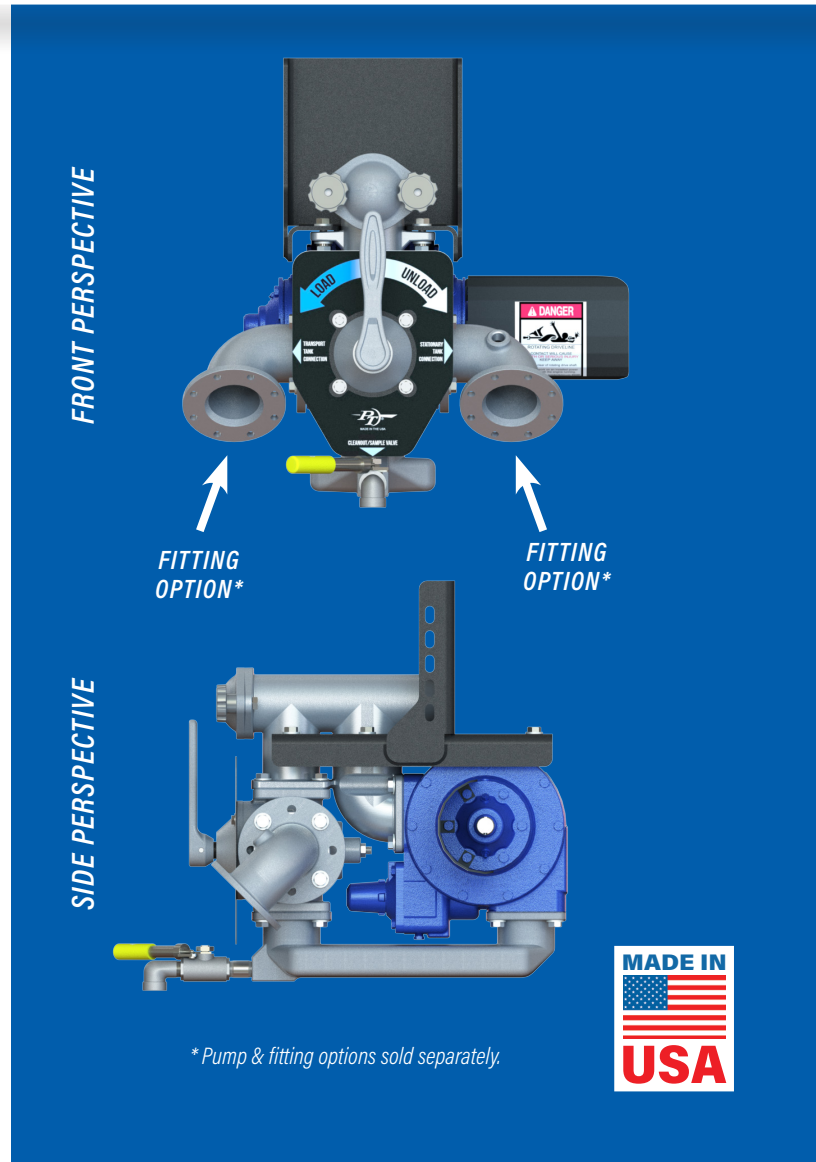


PT's **FCS-V3N VANE SYSTEM** (Item No. 100414), is a 72 lb. (without pump) assembly that is designed for loading and unloading refined fuels utilizing a 3" vane pump. While the FCS-V3N system is truck mounted on the driver's side or curb side, the system is available with a crossover kit that allows for trans-loading from the opposite rail.

The FCS-V3N System is PT's longest running Safety Pumping System on the market, helping protect drivers and the environment for years without incident, offering zero-retain, tactile feedback, 100% o-ring mounting surfaces (no gaskets).

FEATURES:

- Application is for: Refine/Downstream
- Mounts: Curb-side or Driver-side
- Weight: 72 lbs. (without pump)
- 240 Gallons Per Minute (GPM based on 640 RPM rating)
- Housing Material: Aluminum
- Elastomers: FKM
- Pump Selection Recommends: FKM 3" Blackmer Vane TXD3E



Visit your local PT Representative
call 1-800-654-0320

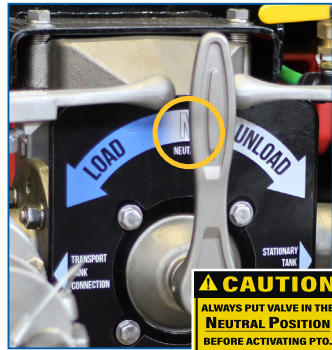
www.ptcoupling.com

* Pump & fitting options sold separately.





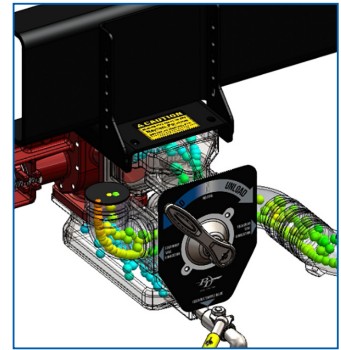
Flow Control System Mounted on Tank or Truck to connect to PTO (drive-line or hydraulically)



Driver verifies system in NEUTRAL position



Driver engages PTO



Flow through system

HOW IT WORKS

The Flow Control Systems are designed to be driver friendly. Every system features a similar look and operating procedures. The difference between systems are the mounting locations and the pump that drives the system.

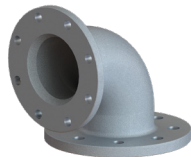
The Flow Control Systems work by mounting the Flow Control System assembly to the side of a truck or trailer. The pump of the Flow Control System is connected to the trucks PTO either driveline or hydraulically driven.

FITTING OPTIONS

The fitting options within the PT Safety Tank Solutions® aren't standard per kit as these are chosen based upon the end users' transportation media needs. Fitting options are sold in addition to the Flow Control System kit, a few examples can be seen below.



30BPFX30A



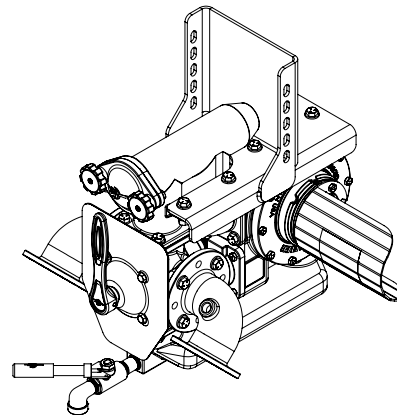
30BPFX30TTF

CHECK THIS OUT!



Watch PT's animation of this specific system.

With the Flow Control System in neutral, the driver engages the PTO and media begins circulating within the pump. The driver may then control what action is necessary to complete the job: either load or unload the tanks.



FLOW CONTROL SYSTEM - FCS-V3N		
ITEM NO.	DESCRIPTION	COMPATIBLE PUMP
100414	FCS-V3N - 3" Vane System	3" Blackmer Vane TXD3E or equivalent

Call your local PT Representative today or go online to find out how PT has solutions for your needs:

CALL 800-654-0320 / EMAIL: INFO@PTCOUPLING.COM



www.ptcoupling.com

